



Computerized

Tire Dealer Information Systems

703 S. Glover Ave
Urbana, IL 61802

Toll Free (800) 397-8100

Daytime (217) 384-8891

FAX (217) 284-8099

Autodata

Service Maintenance

Schedules

From JMK Systems

Autodata Service Maintenance Schedules From JMK Systems

- I. Autodata Service Maintenance Schedules are available directly through OE option 2 for any work order that has established vehicle information
 - A. Autodata Service Maintenance Schedules
 1. Access this information via OE option 2 I screen **DD** option.
 2. Customer vehicle data must be established via OE option **2 O** screen

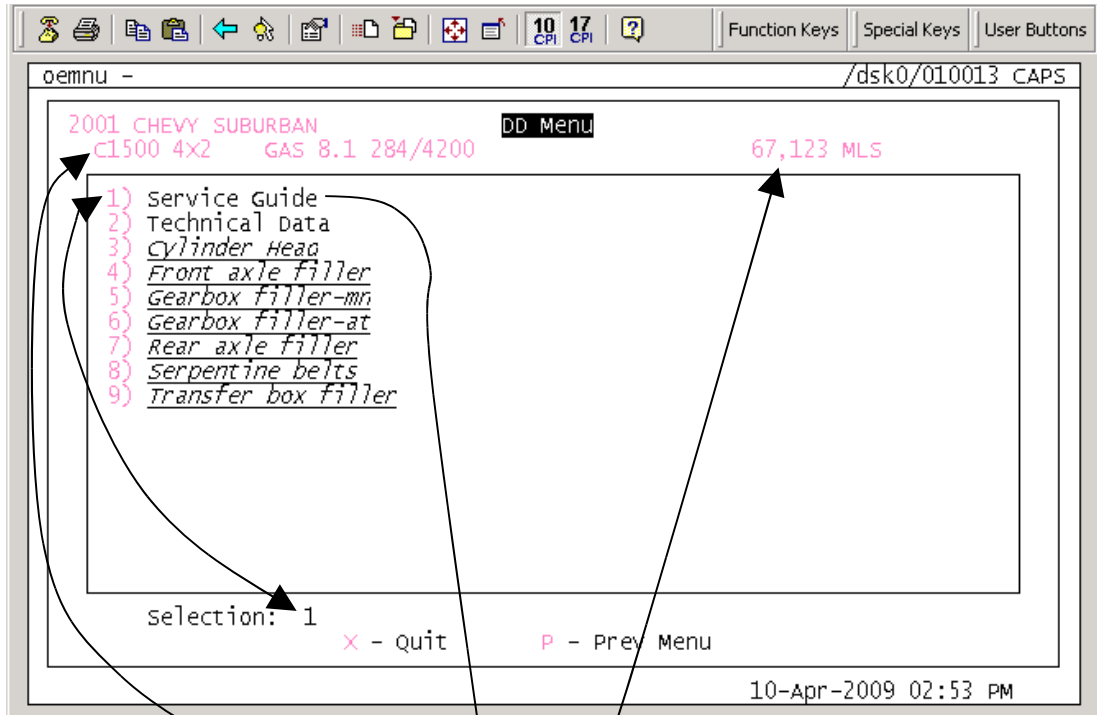
The screenshot shows a software interface for Autodata. At the top, there is a menu bar with various icons and function keys. Below this, the main window displays work order information for a Chevy Suburban. A table lists items with columns for L#, Part #, Description, QTY, BO, Sell, and Ext \$. At the bottom, there are navigation options and a summary table.

| L# | Part # | Description | QTY | BO | Sell | Ext \$ |
|----|---------------|---------------------------------|-----|----|-------|--------|
| 1 | SX | TEST | 2 | 0 | 33.25 | 66.50 |
| 2 | GRAQLS5/207BW | P205/75R15 97S GY AQTRD L P/S W | 2 | 0 | 97.99 | 195.98 |
| 3 | @LW5486 | CRAGER STYLE WASHER-CENTER(C) | 2 | 2 | 0.57 | 0.00 |
| 4 | | THIS IS A COMMENT | | | | |
| 5 | | | | | | |
| 6 | | | | | | |
| 7 | | | | | | |
| 8 | | | | | | |
| 9 | | | | | | |
| 10 | | | | | | |
| 11 | | | | | | |

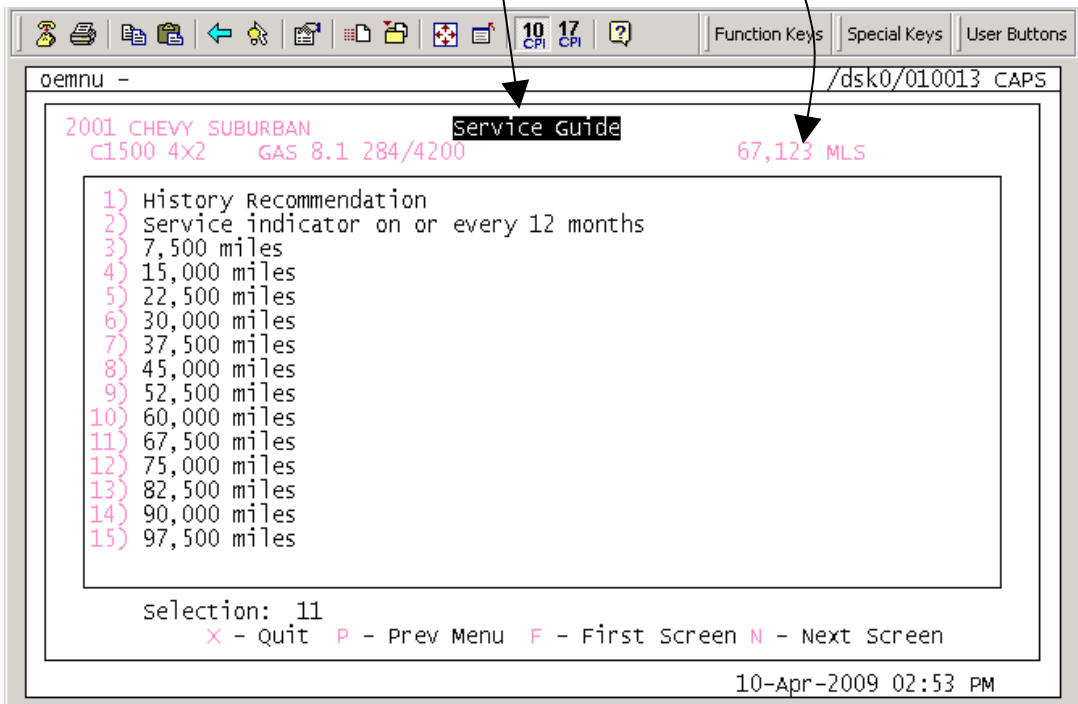
| | | |
|-------------------------------------|--------------------|-------------------------|
| Enter option# or screen letter.: DD | 'Screen' Choices | Itm Subt: 262.48 |
| 1-ADD Line | P-Pymt T-Tran His | Add/Dis: |
| 2-CHG Line | C-Comm A-Add/Disc | 6.000%TX |
| 3-DEL Line | O-Order V-veh Info | SUBTOTL: 278.23 |
| 4-NEXT Page | H-A/R Info | \$\$\$ Recvd: |
| 6-ck Item actvy | E-End X-Exit=>MSO | NetDUE\$: 278.23 |
| | | w/O B/O\$: 279.44 |

14-Apr-2009 01:26 PM

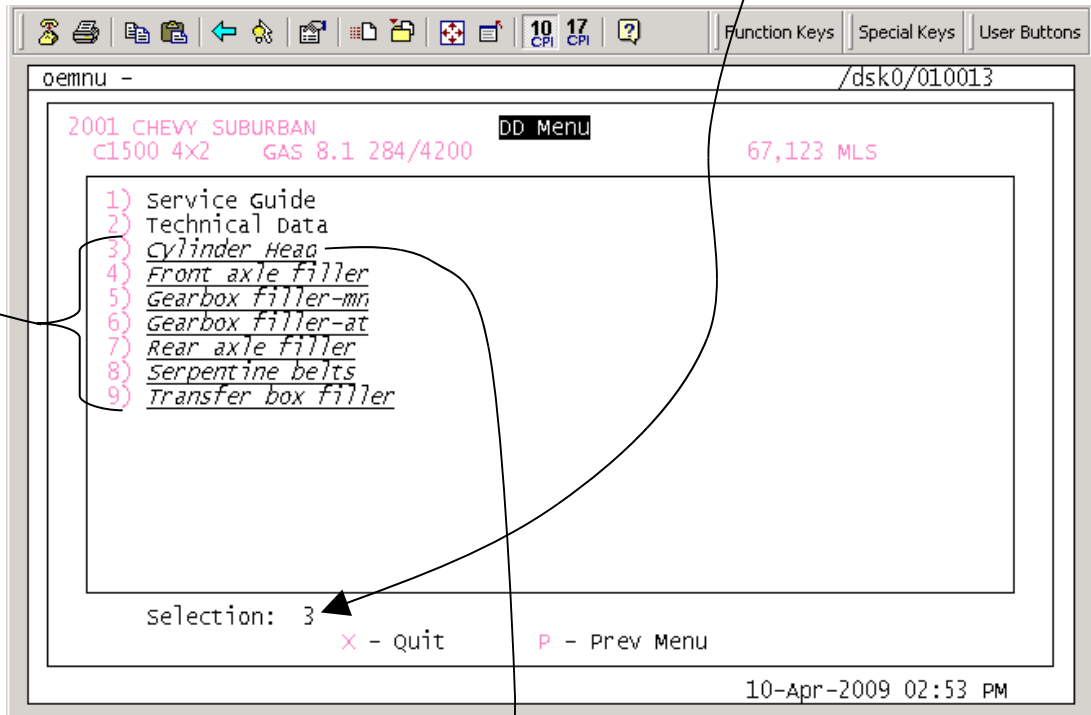
2. Select the desired option from the list displayed.



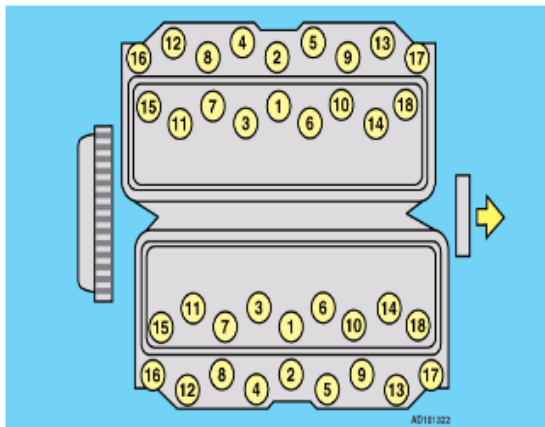
Note integrated vehicle manufacturer supplied data from data supplied via OE option 2 **O** screen



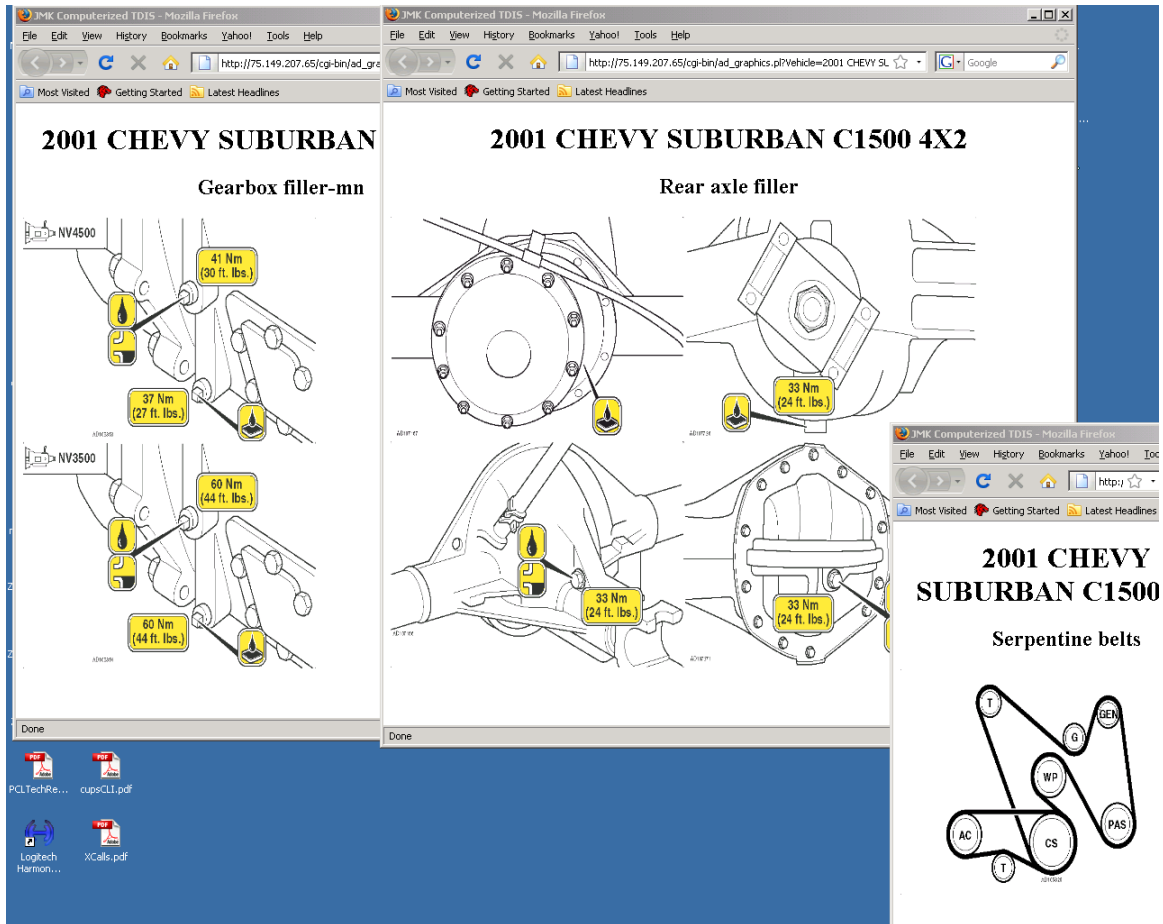
3. Information available from links to Autodata's web site are indicated by underline italic text. Double click on these fields, or select by line number, to display data via your web browser.



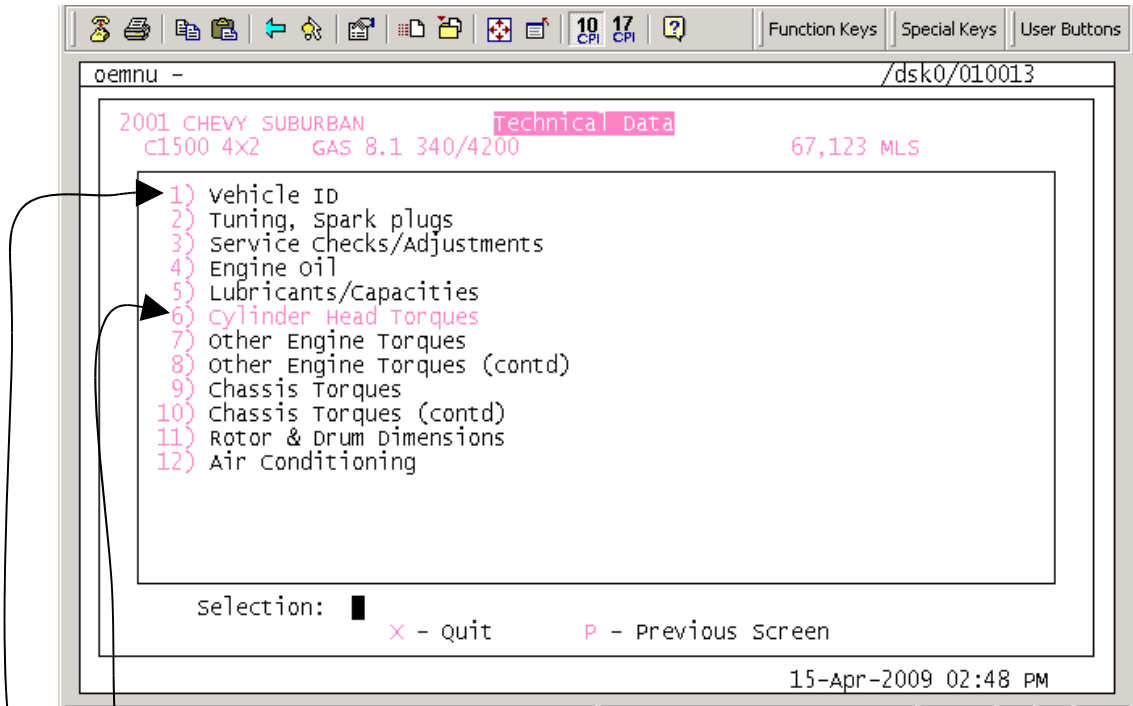
**2001 CHEVY SUBURBAN
C1500 4X2**
Cylinder Head



4. You can display as much data as needed on your PC desktop by clicking on the various links shown on the DD Menu screen.



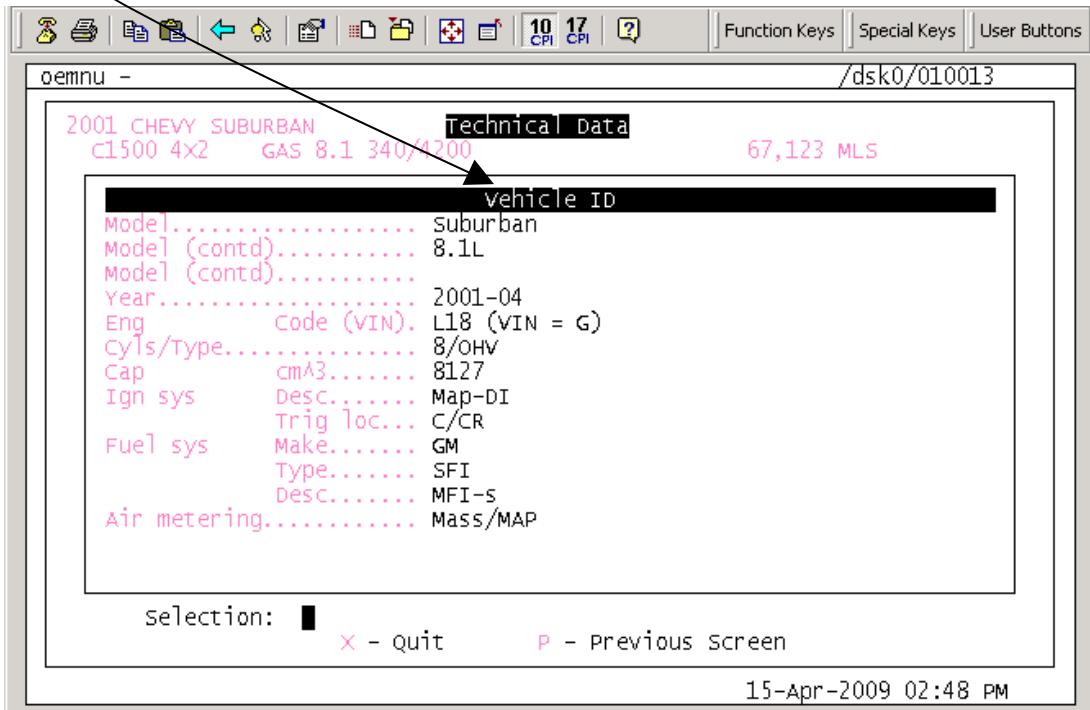
B. Technical Data



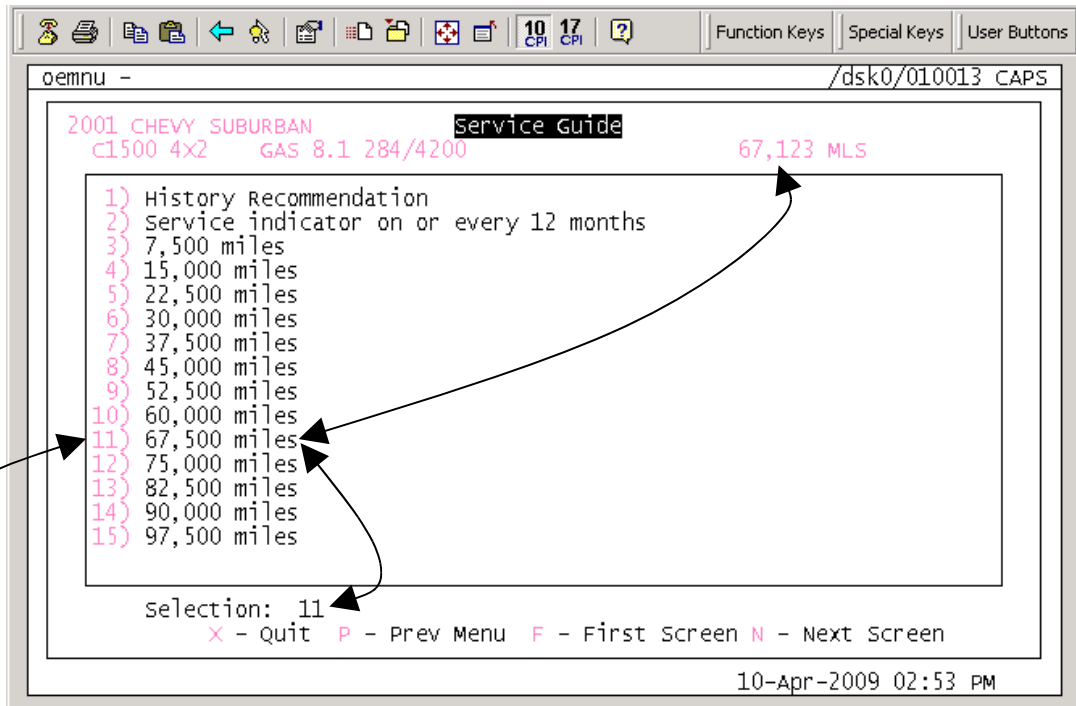
1. Select desired information by line number.



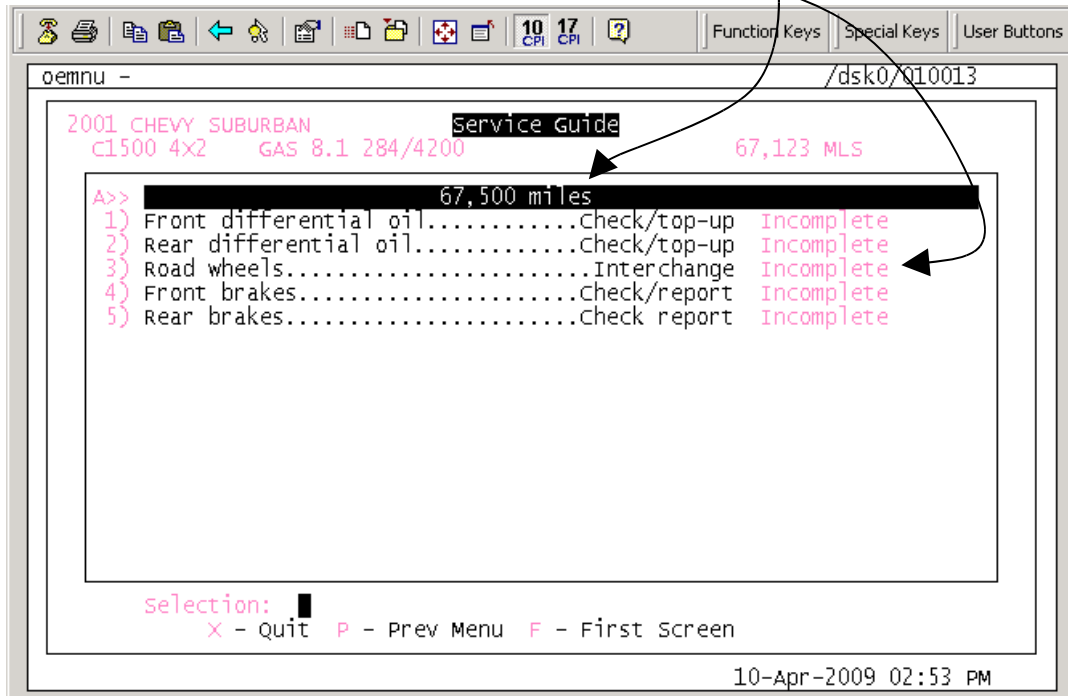
Line displayed as dimmed text will not have any data available to be looked up.



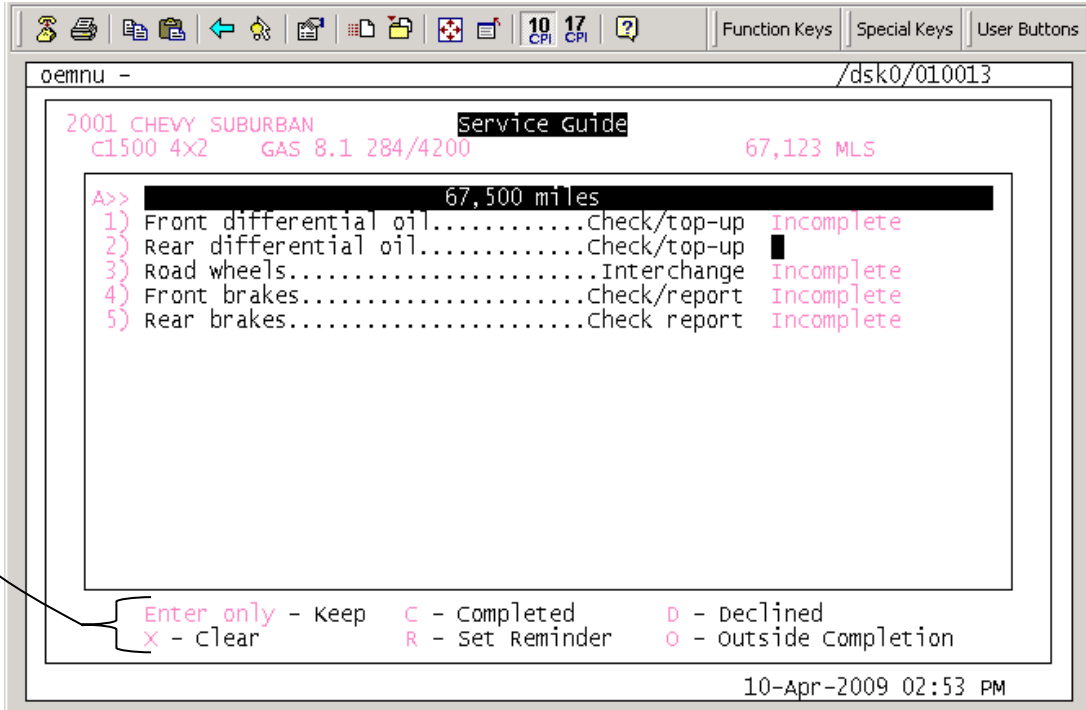
C. Service Guides



Selection options quickly display recommended services and their current status.



1. Service Status can be easily updated. The service data is tied to the vehicles VIN and is retained through multiple owners and regardless of servicing location.



Appendix A: Data content

- I. Phase I release, scheduled for **3rd quarter** this year, the system will have integrated AUTODATA's:
 1. Service schedules
 - a. Autodata's service schedules based on OEM recommendations
 2. Technical specifications
 - a. Vehicle identification
 - b. Tuning
 - c. Service Checks and adjustments
 - d. Lubricants and capacities
 - e. Brake dimensions
 - f. Tightening torques
 - g. Illustrations created for:
 - 1) Technical data
 - 2) Service illustrations
 - a) Serpentine belts
 - b) Transmission and differential service
 - c) Lift points
 - d) Pollen filters
- II. Phase II release scheduled for the end of the **4th quarter**, we expect to add these additional topics from AUTODATA.
 1. Diagnostic trouble codes
 2. Key programming
 3. Engine management:
 - a. Pin data and pin values
 - b. Connector locations
 - c. Circuit theory
 - d. Oscilloscope patterns
(not available for all models)

4. Labor guide
5. Timing belts & chains information
6. EM Technical service bulletins as applied to service subjects
7. Service Indicator Database
8. Dictionary of common terms and abbreviations

All of this data is also available from many outside sources, but by incorporating it into the "point of sale" system, it should be much easier to access.

Appendix B

Actions for Service Schedules based on OEM recommendations

Check for damage Overhaul
Clean/adjust Check/report
Interchange Drain water
Check/top-up Clean
Check report Drain
Check/replace Renew
Drain/refill Visual check
Clean/lubricate Check/tighten
Service Renew if necessary
injection Adjust
Check for leaks Flush
Check condition Lubricate
Check operation Clean/renew oil if necessary
Re-torque Check/adjust
Check cleanliness Remove/refit
Clean/renew if necessary Recharge
Tighten Apply
Check tightness Pressure test
Add Safety inspection
Check/clean Check security
Clean/re-grease carburetor
Check Check/lubricate
Check/renew if necessary Strip/clean/lubricate
Reset

Appendix C

Items for Service Schedules based on OEM recommendations

4 gas test Air intake hoses
4WS joints Air intake valve
4WS solenoid valve oil filter Air suspension
ABS function Air tank(s)
ABS high pressure hose Airbag module/clock spring
ABS sensor wiring Airbag sensors
ABS warning system Airbag/pretensioners
AC drive belt Airbags/system
AC/power steering drive belt Alarm/immobilizer
Accessory drive belt idler Alternator drive belt
Accessory drive belt tensioner Alternator drive belt tensioner
Accessory drive belt/s Alternator rubber coupling
Active torsion bar system Anti-corrosion treatment
Active torsion bar system filter AU test (Germany only)
Active torsion bar system/power steering fluid res Australia: Cyclone pre-air cleaner
AdBlue fluid Auto temperature control air filter
AdBlue fluid filter Auto transmission brake bands
AdBlue system Auto transmission inhibitor switch
AFTER ROAD TEST Auto transmission kickdown cable
Air brake actuators Auto transmission level
Air brake control arms and rods Auto transmission linkage
Air brake valves and lines Auto transmission oil
Air compressor Auto transmission oil cooler hoses
Air compressor drier Auto transmission oil filter
Air compressor drier desiccant Auto transmission oil leaks
Air compressor drier filter Auto transmission selector warning device
Air compressor intake filter Auxiliary oil cooler, lines and hoses
Air conditioning Auxiliary fuel filter
Air conditioning compressor Auxiliary heating
Air conditioning condensor Auxiliary heating fuel filter
Air conditioning deodoriser Auxiliary oil filter
Air conditioning dryer check for water Axle stabiliser bar/links
Air conditioning receiver/dryer Back glass washer
Air conditioning refrigerant level Balancer shaft drive belt, if fitted
Air conditioning ventilation filter Barometric pressure (BARO) sensor
Air filter Battery acid cartridge
Air filter dump valve Battery condition/specific gravity
Air filter housing/pipes/hoses Battery electrolyte level
Air filter oil bath type Battery leads attachment to the bodywork
Air inductive valve filter Battery terminals

Documentation/MarketingAids

Air injection filter Bio diesel fuel filter
Air intake heater Body mountings
Body work/paint Clutch fluid reservoir
Brake air drier Clutch hydraulic system
Brake anti-freeze Clutch operation
Brake auto adjust system Clutch release bearing
Brake flexible hoses Clutch system
Brake fluid reservoir CO content
Brake hydraulic fluid CO content Cat
Brake hydraulic system CO content non Cat
Brake lining wear read out Cold start device
Brake linings through inspection hole Compressions
Brake load compensator Coolant filter
Brake master cylinder Coolant hoses
Brake pipe corrosion Coolant level/anti-freeze strength
Brake pressure regulator Coolant pressure relief valve
Brake servo Coolant/anti-freeze
Brake servo boot and filter Cooling system
Brake servo hoses/check valve Cooling system pressure cap
Brake servo vacuum nipple Cooling system thermostat
Brake/clutch pedal heights Crankcase ventilation
Brake/clutch pedals Crankcase ventilation filter/cap
Brakes Crankcase ventilation flame trap
Cab mountings Crankcase ventilation valve
Cab tilt hydraulic oil Crankshaft position (CKP) sensor
Cab tilt system Cruise control hoses/operation
Cabin filter, if fitted CVT clutch carbon brushes
Camber/castor CVT clutch disengage device
Carburettor dashpot CVT clutch plate clearance
Carburettor diaphragm CVT drive belts
Carburettor jets Cylinder head bolts
Carburettor solenoid valve Diesel dynamic pump timing
Catalytic converter Diesel fuel filter
Catalytic converter/particulate filter condition Diesel fuel sedimentor
Central hydraulic system Diesel injection pump drive belt
Central hydraulic system fluid Diesel injection pump drive belt tensioner
Central hydraulic system fluid filter Diesel injection timing
Central locking system Diesel injector calibration
Central locking/alarm remote unit batteries Diesel injector pipes
Centrifugal oil filter Diesel injectors
Charcoal filter Diesel lift pump
Charcoal prefilter Diesel max. speed governor
Charcoal prefilter Diesel max. speed governor
Charging system Diesel particulate filter additive
Chassis and body nuts/bolts Diesel particulate filter, if fitted

Documentation/MarketingAids

Chassis auto lubrication system Diesel pre-filter
Choke cable Diesel primary fuel filter
Clutch clearance Diesel secondary fuel filter
Clutch fluid Diesel smoke emission
Diesel static pump timing Fault diagnosis trouble codes
Diesel vacuum pump Fifth wheel coupling
Diesel vacuum pump oil hoses FINAL ITEMS CHECK
Direction indicators/hazards Fluid condition/leaks/levels
Distributor cam Flywheel housing (if plugged)
Distributor contact breakers Folding roof mechanism
Distributor mechanical/vacuum advance Footbrake travel
Distributor rotor/cap/brush Free wheel hubs
Drive shaft boots Front brake calipers
Drive shaft joints/seals/boots Front brake calipers/cylinders
Driveshaft joints Front brake calipers/pads
Driveshaft splines Front brake drums/linings
Drum brakes Front brake pad wear sensors
DSG transmission oil Front brake pads
DSG transmission oil filter Front brake pads/guide pins
DSG transmission oil leaks Front brake rotors
DSG transmission oil level Front brakes
Dwell angle Front differential breather
ECU control box filter Front differential lock
EGR filter Front differential oil
EGR system Front differential oil leaks
EGR valve/hoses Front differential thrust device
Electric retarder air gap Front wheel alignment
Electronically controlled suspension Front wheel bearings
Engine Front wheel bearings, oil lubricated
Engine accessory mountings Front wiper blades
ENGINE BAY OPERATIONS Front wiper linkage
Engine cover retaining clips Fuel breather system
Engine covers and shields Fuel cooler
Engine electric cooling fan Fuel filter
Engine fast idle Fuel heater filter
Engine fault diagnosis trouble codes Fuel injectors
Engine mountings Fuel pressure
Engine oil Fuel system leakage
Engine oil change indicator Fuel tank
Engine oil filter Fuel tank additive
Engine oil leaks Fuel tank leakage
Engine performance Fuel tank mountings
Engine retarder Fuel tank vent valve
Engine vacuum hoses Gear lever operation
EVAP system Glow plug wiring

Documentation/MarketingAids

Exhaust brake/retarder operation Glow plugs
Exhaust system/mountings Glow plugs activation time
Fan drive belt Haldex coupling oil
Fan drive belt tensioner Haldex coupling oil filter
Fan hub and drive Handbrake
Handbrake cables/linkages Power steering fluid
Handbrake travel Power steering fluid filter
Headlamp alignment Power steering hoses
Headlight levelling system Power steering system
Headlight wash/wipe Power take-off fluid
Headlights Radiator
Heater blower Radiator rubber side seals
Heater intake filter Rear brake calipers
Heater unit(s) Rear brake calipers/cylinders
High tension leads Rear brake calipers/pads
High tension leads/coil Rear brake drums/linings
Hill holder system Rear brake linings
Hood latch and lock Rear brake pad wear sensors
Horn Rear brake pads
Hub reduction unit Rear brake pads/guide pins
Hydraulic gear shift fluid Rear brake rotors
Idle speed Rear brakes
Idle speed control system Rear differential breather
Ignition timing Rear differential oil
Inner windshield area (if night vision camera fitted) Rear differential oil leaks
Instrument illumination Rear differential thrust device
Instruments Rear handbrake linings
Instruments/warning lamps Rear wheel alignment
Intercooler Rear wheel bearings
Interior lamps Rear wheel bearings, oil lubricated
Interior/exterior mirrors Rear wiper
King pins Retarder fluid
Lane departure warning system sensors Road springs
Leaf spring mountings ROAD TEST VEHICLE
Lift axle Road wheel nuts/bolts
Lift axle fluid Road wheel spigots
Lighting system Road wheels
Lubrication points and linkages Rollover protection system
Manifolds Seatbelts/mountings
Mass air flow (MAF) sensor Secondary/parking brake
Maximum limited vehicle speed Secondary/parking brake operation
Odour filter, if fitted Self-levelling suspension fluid
Oil by-pass filter Service interval indicator
Oil pan shield Shock absorbers/mountings
Operations from 'Additional service items' Side airbags

Documentation/MarketingAids

Outstanding campaigns and recalls Sliding window seals
Oxygen sensor Spark plugs
Pedal pads Spark plugs 10V
Plenum chamber Spark plugs 12V
Power steering drive belt Spark plugs 16V
Power steering drive belt tensioner Spark plugs 20V
Spark plugs 24V Tire pressures
Spark plugs 8V Tire repair canister
Speedometer cable Torque converter
Starter motor brushes Towing hitch
Steering box Trailer air/electrical connections
Steering column couplings Transfer case accumulator
Steering free-play Transfer case breather
Steering joints Transfer case oil
Steering rack boots Transfer case oil leaks
Steering rack/box Transfer case operation
Steering system Transmission
Sump pan bolts Transmission air system
Sunroof drain tubes Transmission breather
Sunroof guide rails Transmission linkage
Sunroof seal Transmission oil
Supercharger Transmission oil filter
Supercharger drive belt Transmission oil leaks
Supplementary restraint system Trip computer
Suspension boots Turbo boost pressure circuit
Suspension fluid Turbo boost pressure switch
Suspension fluid reservoir filter Turbo damper
Suspension joints Turbo mountings/connections
Suspension joints/seals/boots Turbo wastegate operation
Suspension mountings Turbo wastegate seal
Turbocharger (TC) boost pressure ctl
Suspension ride height valve vent filter
Suspension swivels Turbocharger (TC) control motor linkage
Switches/controls Turbocharger (TC) hoses
Swivel pin housing oil Tire pressure monitoring system
TDC sensor air gap Underbody condition/sealant
Throttle body Underbody covers and shields
Throttle linkage Underbody fluid condition/leaks/levels
Throttle sensor/switch Underbody wiring harness
Through-drive unit oil Underhood wiring/connections
Timing belt Underhood wiring/hoses/connections
Timing belt 16V Vacuum pump drive belt
Timing belt 24V Valve lash
Timing belt idler Valve-operated engine brake
Timing belt tensioner Vehicle condition

Documentation/MarketingAids

Timing chain VEHICLE FULLY RAISED
Timing chain tensioner(s) VEHICLE HALF RAISED
Timing chain(s) Vehicle handling/operation/performance
Tipper hydraulic fluid Vehicle locks/hinges
Tipper system VEHICLE ON FLOOR
Tire condition Vehicle ride height
Tire pressure monitoring sensors Vehicle suspension operation
Tire pressure monitoring system Ventilation charcoal filter
Vibration damper
Wash/wipe system
Washer bottle(s)
Water pump
Water pump drive belt
Wheel balance
Windshield washer